



Experience in the design of crab processor vessels under RS supervision

Nikolay Nazarenko

**(NWFC, Director of Development of UF
North-West Fishing Consortium)**

Nikolay Avtutov

(MEB, Director of perspective development)

lead crab processor the KSP02 project «ARKTUR» (handed over 30 March 2021)



The second vessel of the KSP02 project «AZIMUT» (handed over 17 July 2021)

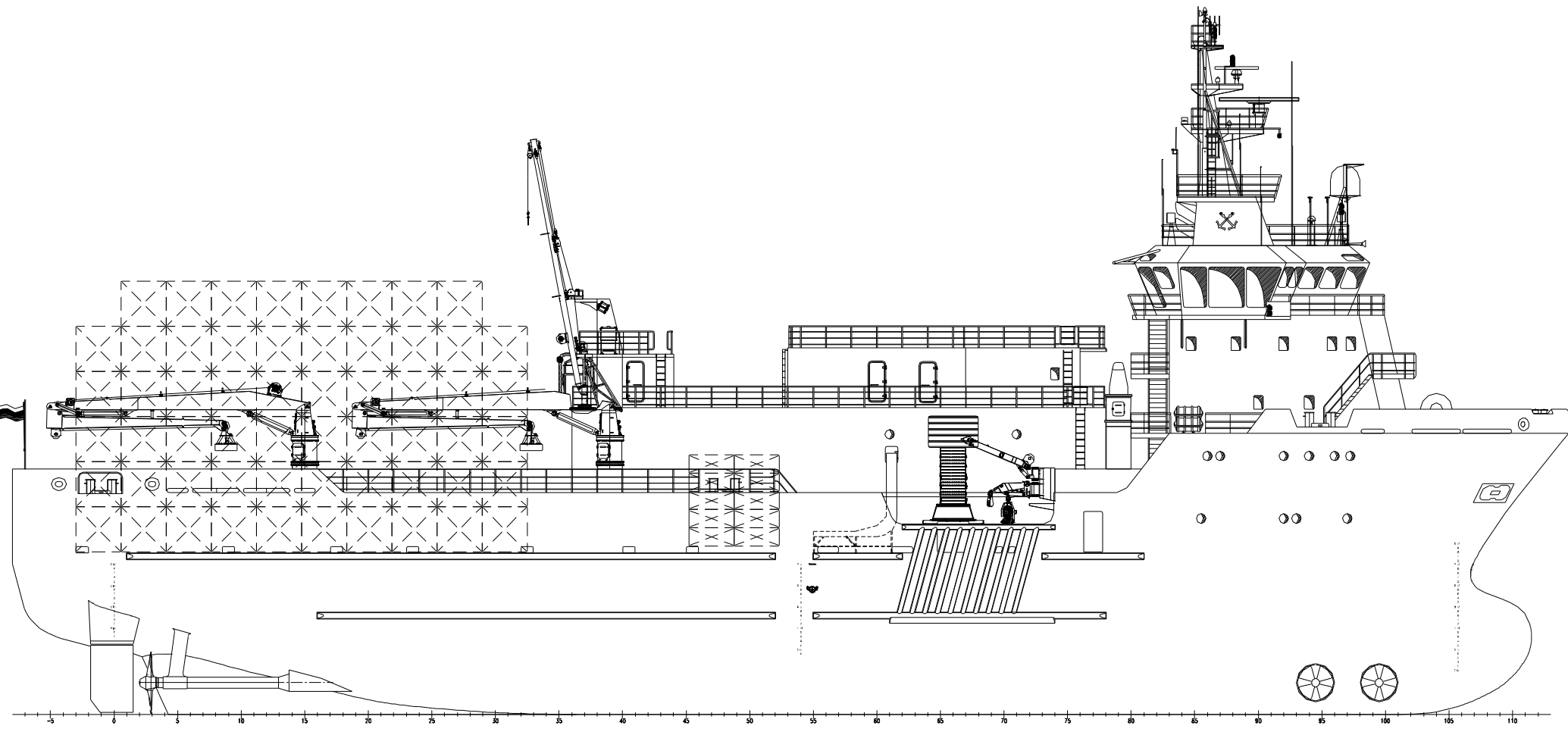


The third vessel of the KSP02 project «NEPTUN» (at the completion stage)





CRAB PROCESSING VESSEL OF THE KSP02 PROJECT SIDE VIEW





CRAB PROCESSING VESSEL OF THE KSP02 PROJECT GENERAL PROPERTIES

Parameter	Value
Main dimensions	
Length, m	73.44
Breadth, m	16.60
Depth, m	7.60
Draught, m	5.90
Deadweight, t	2550
Capacity of the crab processing complex, tons/24 hrs	
Snow crab (raw/ finished frozen products)	30 / 20
Kamchatka crab (raw/ finished frozen products)	60 / 40
Freezer cargo hold capacity, m ³	1400

CRAB PROCESSING VESSEL OF THE KSP02 PROJECT FISHING DECK

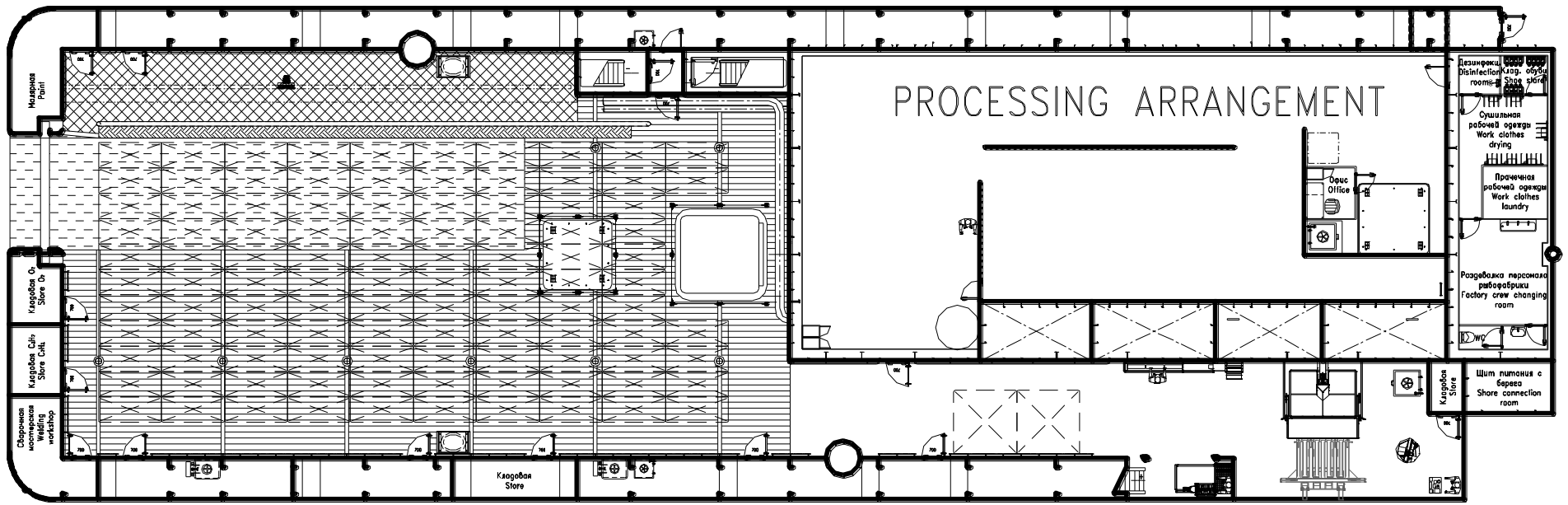
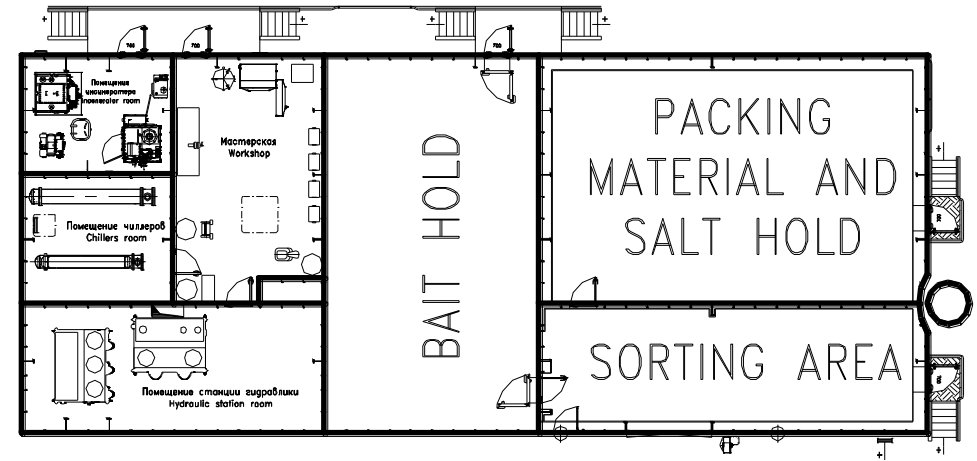
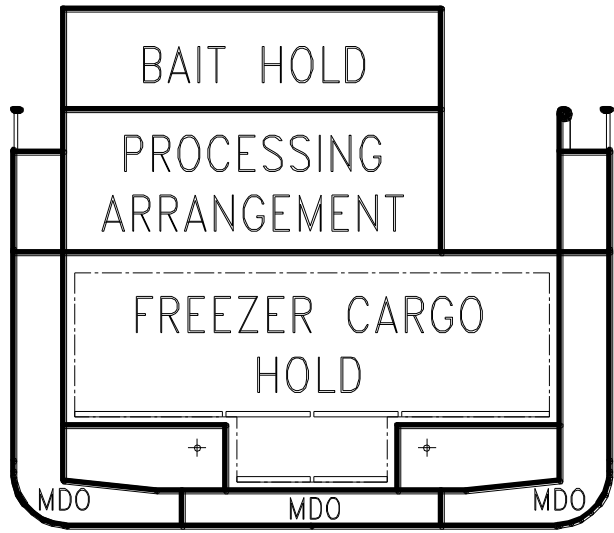


CRAB PROCESSING VESSEL OF THE KSP02 PROJECT FISHING DECK



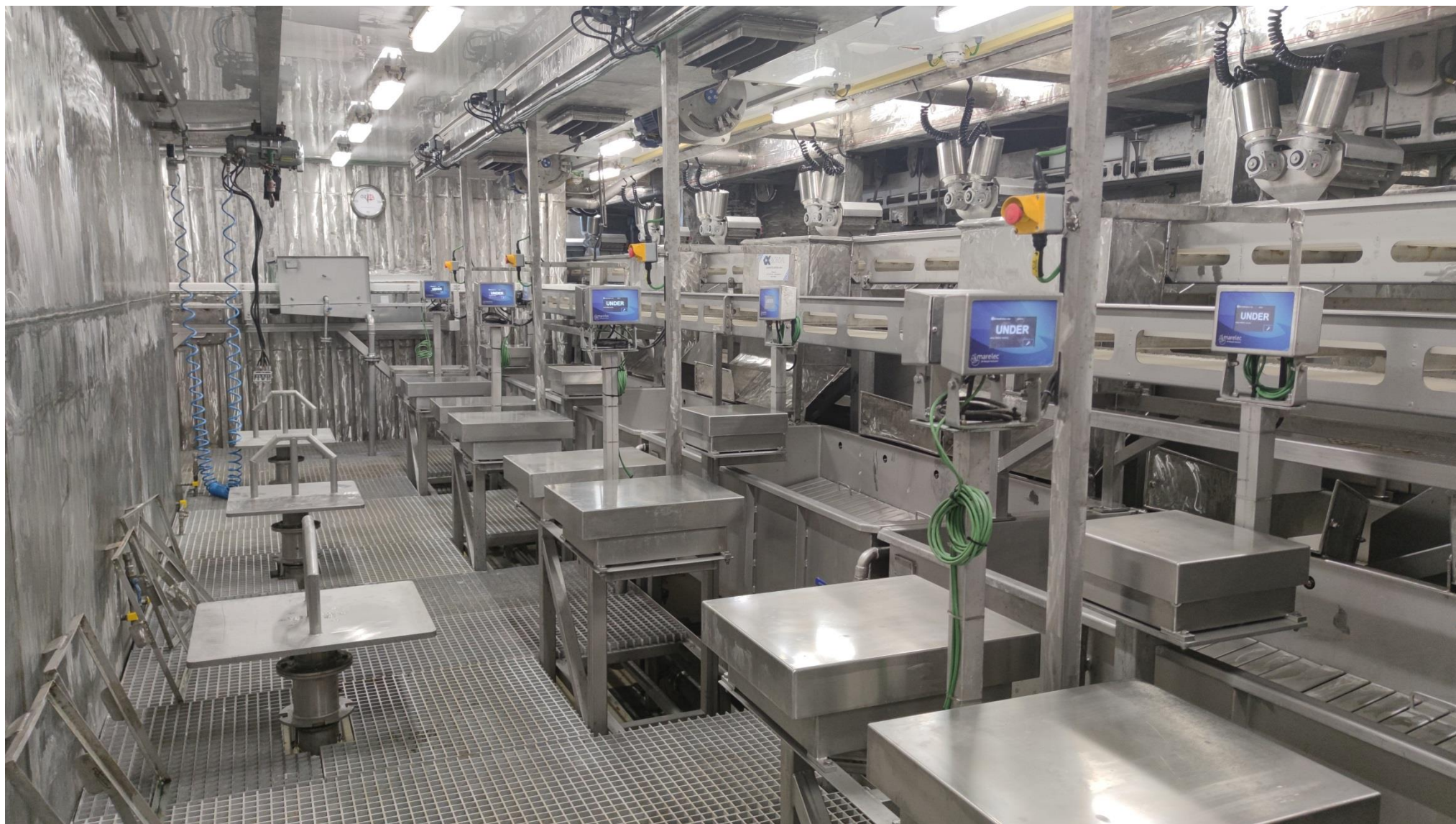
CRAB PROCESSING VESSEL OF THE KSP02 PROJECT

LOCATION OF PRODUCTION SPACES



CRAB PROCESSING VESSEL OF THE KSP02 PROJECT A HINGED POT HAULER II AND A VERTICAL CONVEYOR







CRAB PROCESSING VESSEL OF THE KSP02 PROJECT FREEZER CARGO HOLD





CRAB PROCESSING VESSEL OF THE KSP02 PROJECT FREEZER CARGO HOLD





CRAB PROCESSING VESSEL OF THE KSP02 PROJECT BAIT HOLD



CRAB PROCESSING VESSEL OF THE KSP02 PROJECT PACKING MATERIAL AND SALT HOLD







CRAB PROCESSING VESSEL OF THE KSP01 PROJECT GENERAL VIEW

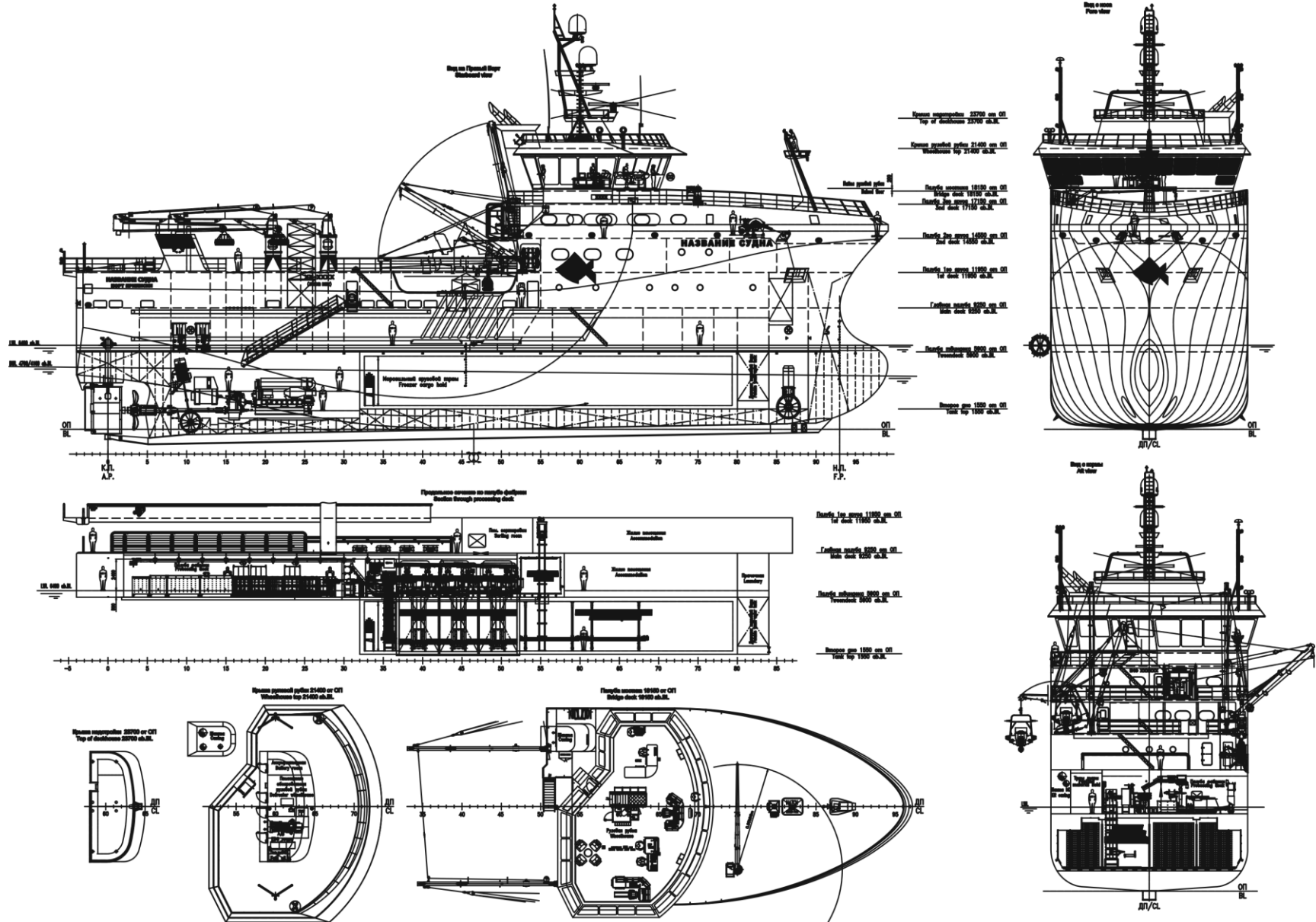




CRAB PROCESSING VESSEL OF THE KSP01 PROJECT GENERAL PROPERTIES

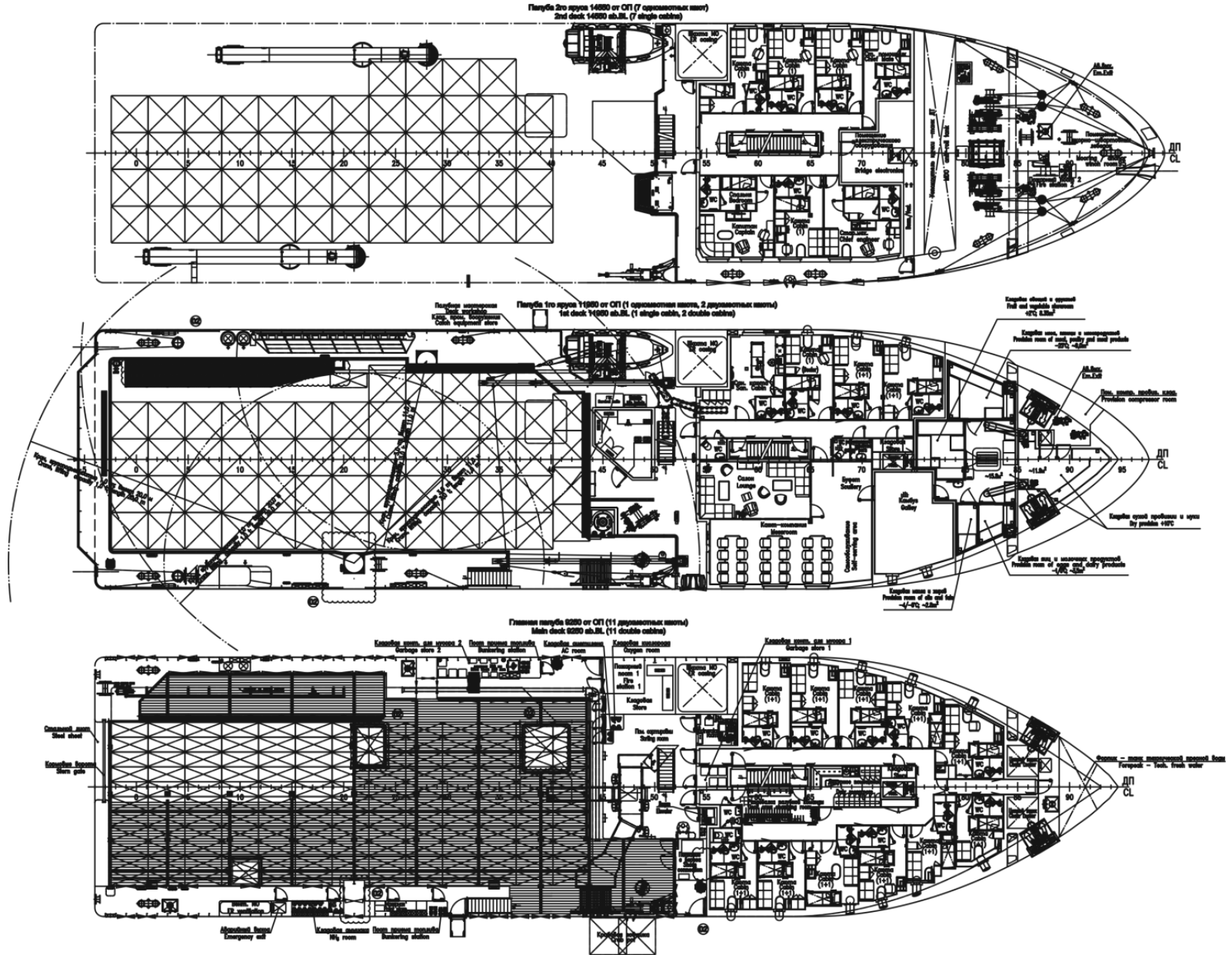
Parameter	Value
Main dimensions	
Length, m	63.20
Breadth, m	15.00
Depth, m	9.25
Draught, m	6.50
Deadweight, t	1510
Capacity of the crab processing complex, tons/24 hrs	
Snow crab (raw/ finished frozen products)	30 / 20
Kamchatka crab (raw/ finished frozen products)	60 / 40
Freezer cargo hold capacity, m ³	1090

CRAB PROCESSING VESSEL OF THE KSP01 PROJECT GENERAL ARRANGEMENT



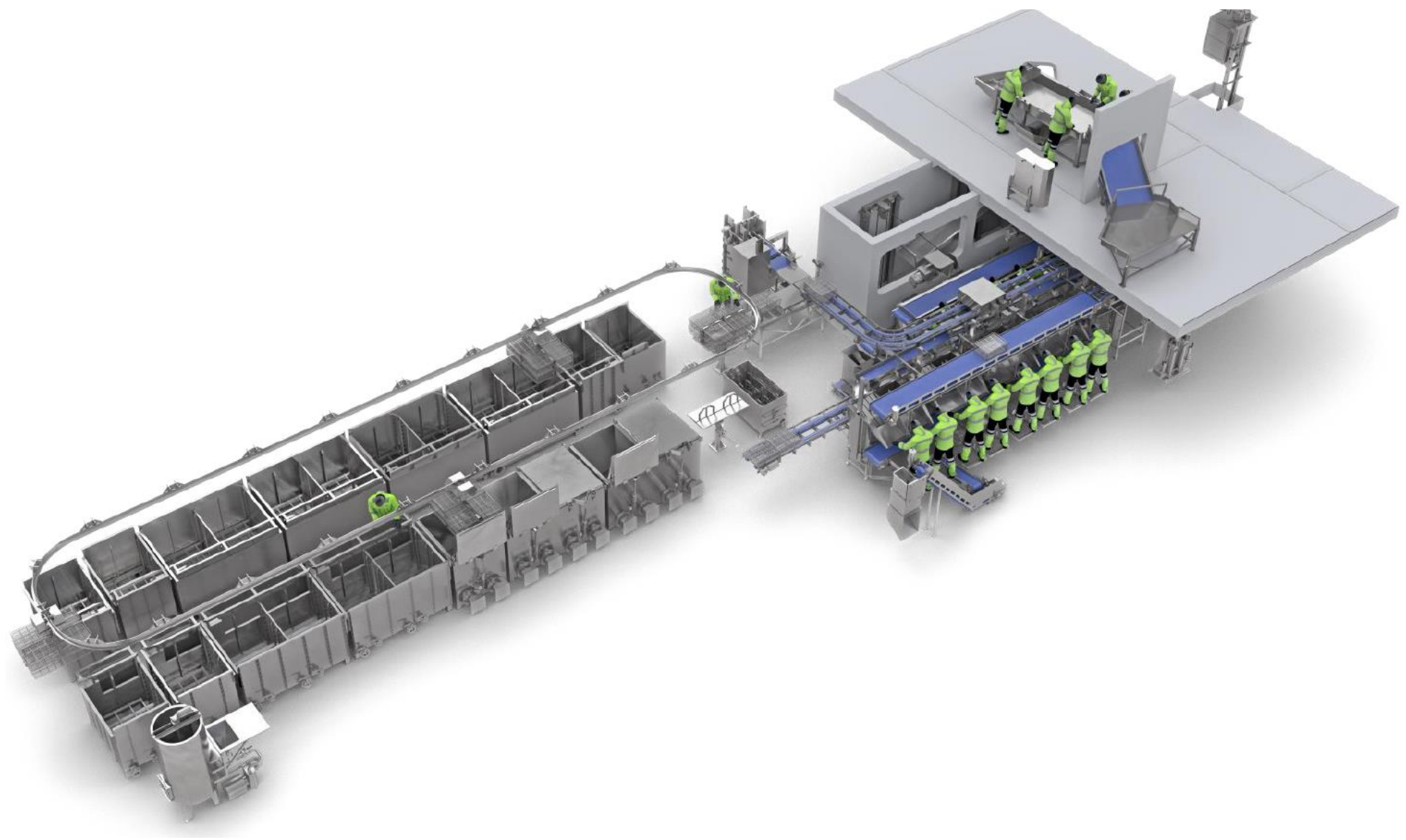
CRAB PROCESSING VESSEL OF THE KSP01 PROJECT

GENERAL ARRANGEMENT





General view of the processing factory BJORDAL for the KSP01 project



CRAB PROCESSING VESSEL OF THE KSP01 PROJECT KEEL LAYING



РОССИЯ
КРАБОЛОВ-ПРОЦЕССОР
ПРОЕКТ КСП01
СТРОИТЕЛЬНЫЙ № 1
ЗАЛОЖЕН 20 МАЯ 2020 ГОДА
ПАО «ЗАВОД «КРАСНОЕ СОРМОВО»

CRAB PROCESSING VESSEL OF THE KSP01 PROJECT KEEL LAYING



CRAB PROCESSING VESSEL OF THE KSP01 PROJECT HULL CONSTRUCTION



CRAB PROCESSING VESSEL OF THE KSP01 PROJECT HULL CONSTRUCTION



CRAB PROCESSING VESSEL OF THE KSP01 PROJECT HULL CONSTRUCTION



CRAB PROCESSING VESSEL OF THE KSP01 PROJECT HULL CONSTRUCTION



CRAB PROCESSING VESSEL OF THE KSP01 PROJECT HULL CONSTRUCTION



